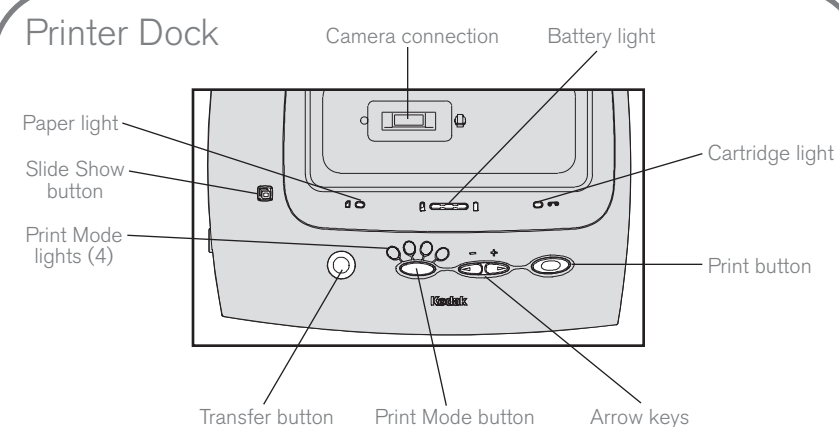
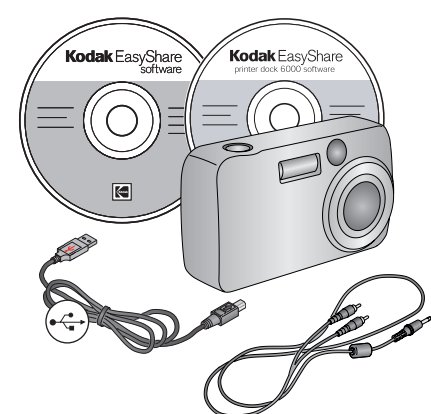


## Kodak EasyShare printer dock 6000

### Overview

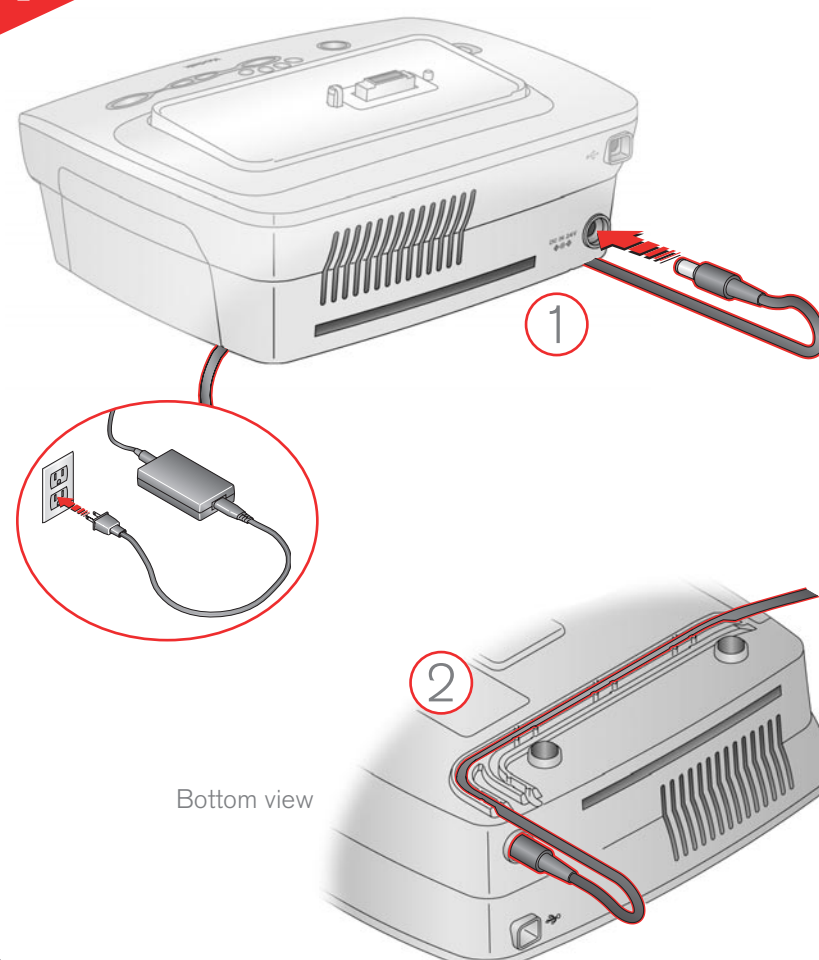


#### What else do I need?

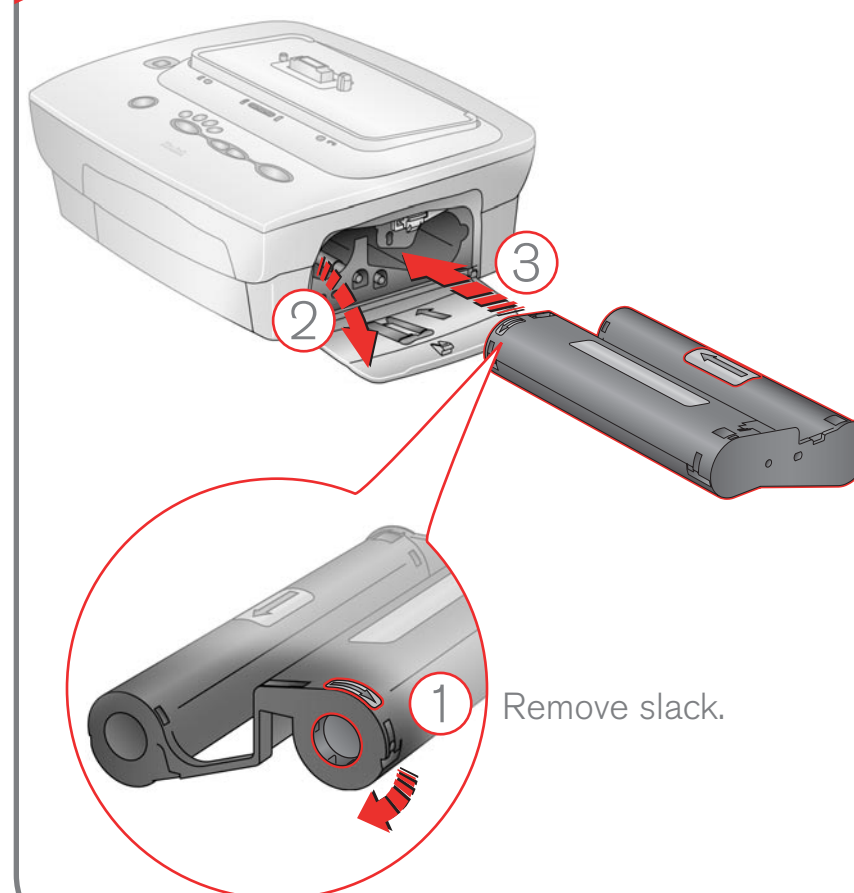


- Kodak EasyShare printer dock 6000 software CD
  - Kodak EasyShare CX/DX 6000 or LS600 series digital camera
- Included with camera:
- USB cable
  - AV cable
  - Kodak EasyShare software

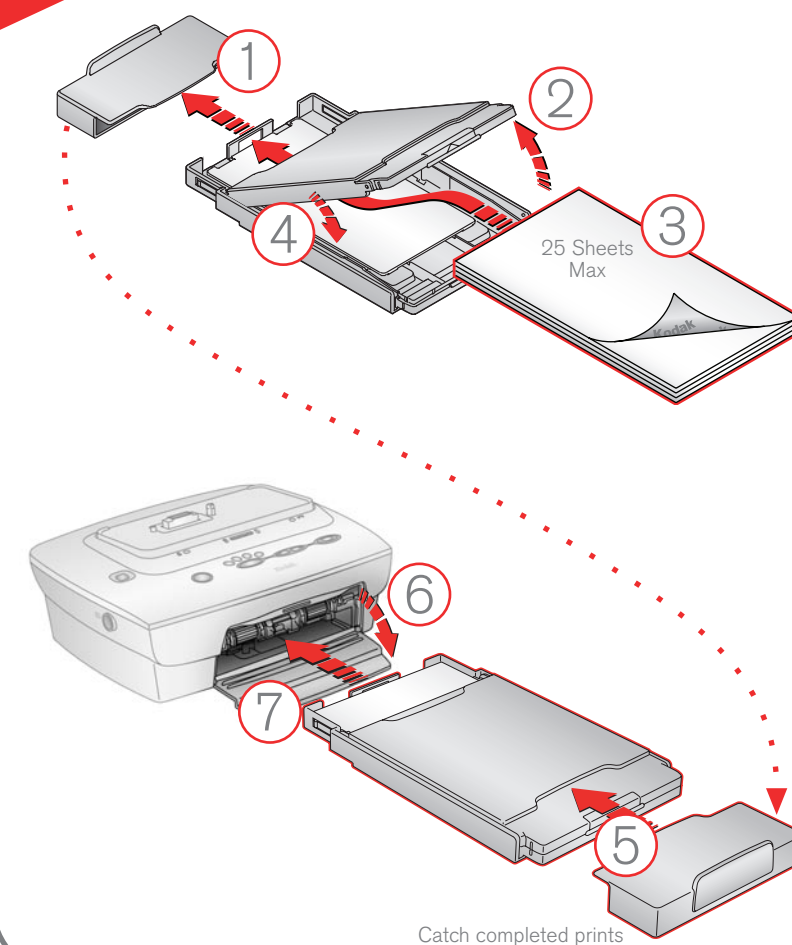
### 1 Connect the Power



### 2 Load Color Cartridge

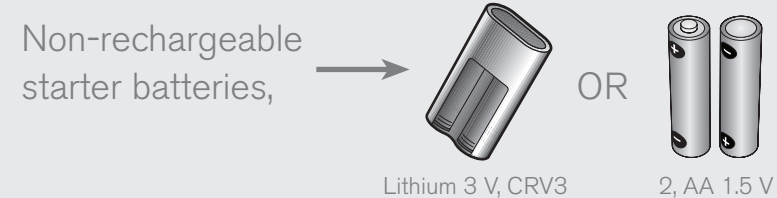


### 3 Load Paper and Attach Tray

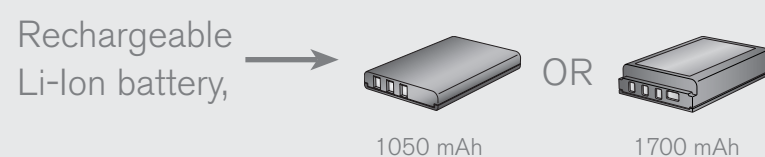
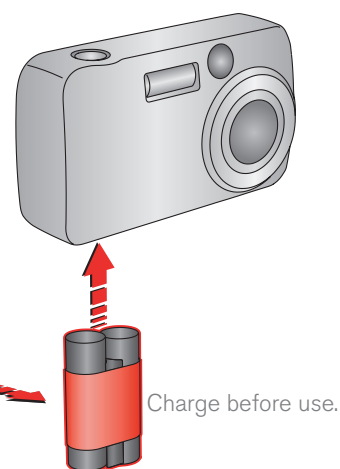


### 4 Install Rechargeable Battery in Camera

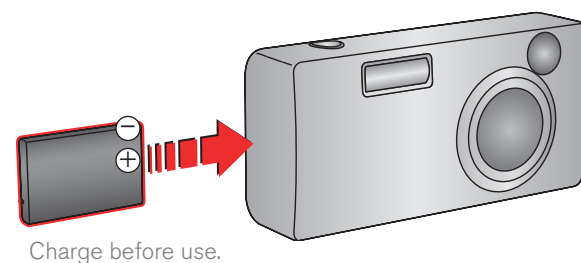
If your camera came with:



use the Ni-MH rechargeable battery pack that came with the printer dock 6000.

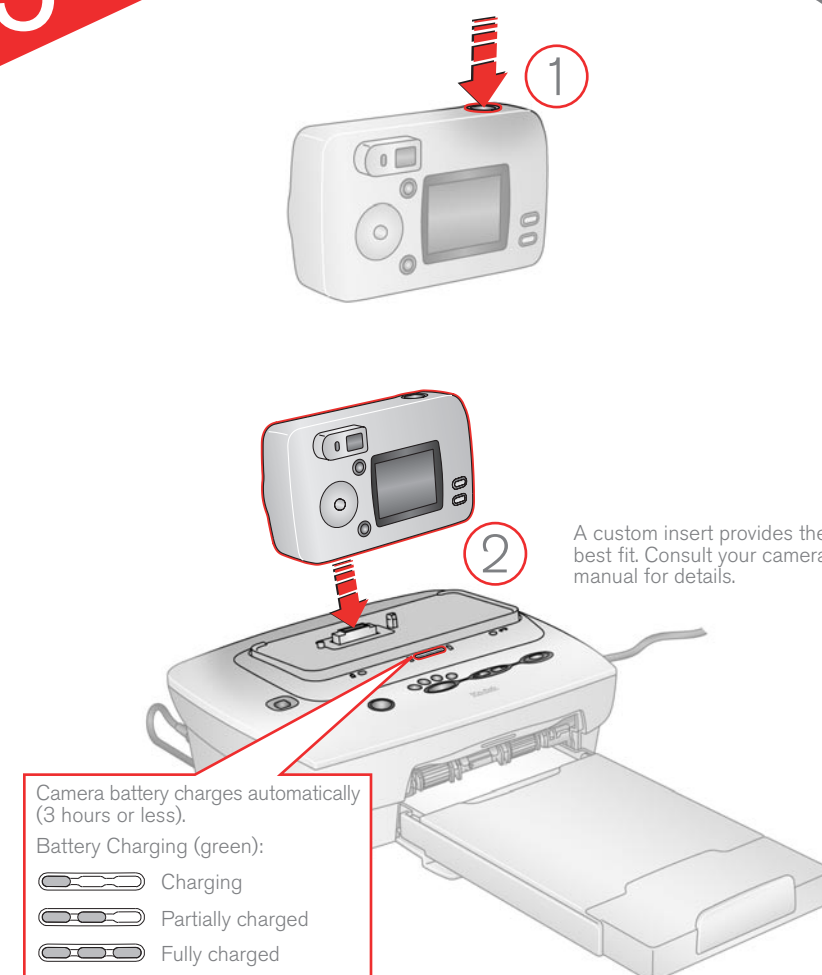


use the Li-Ion battery that came with your camera.

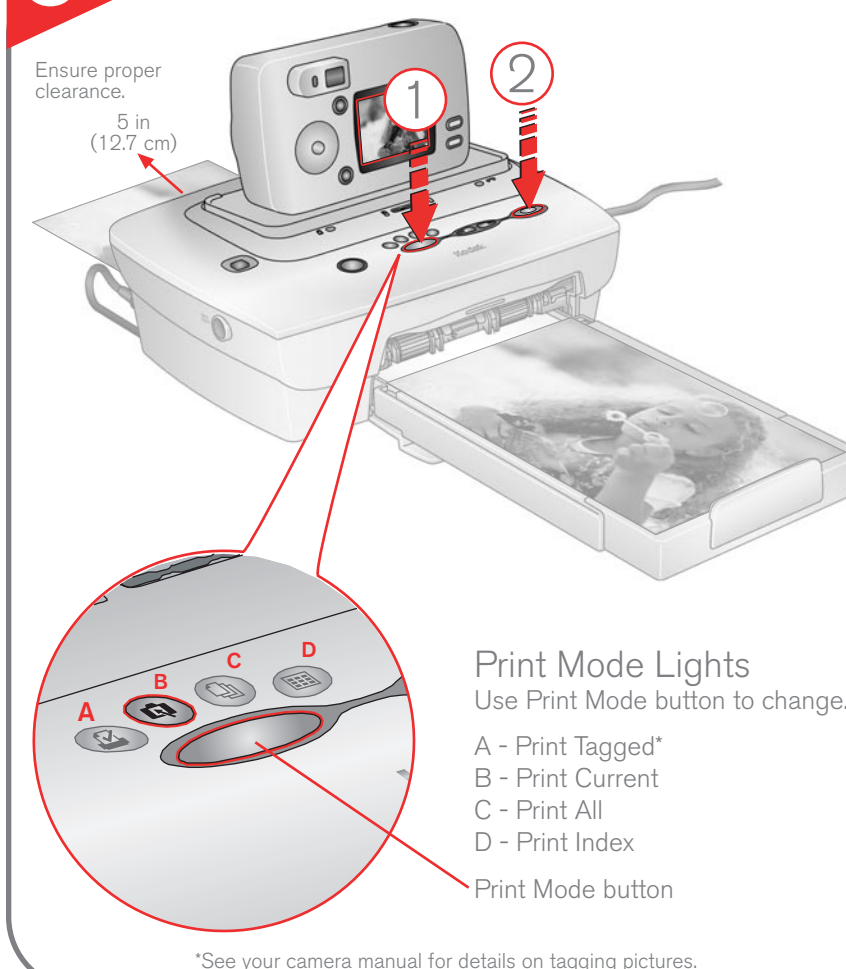


Do **not** try to use the Ni-MH rechargeable battery pack that came with the printer dock 6000.

### 5 Take Picture and Dock Camera



### 6 Verify Mode and Press Print

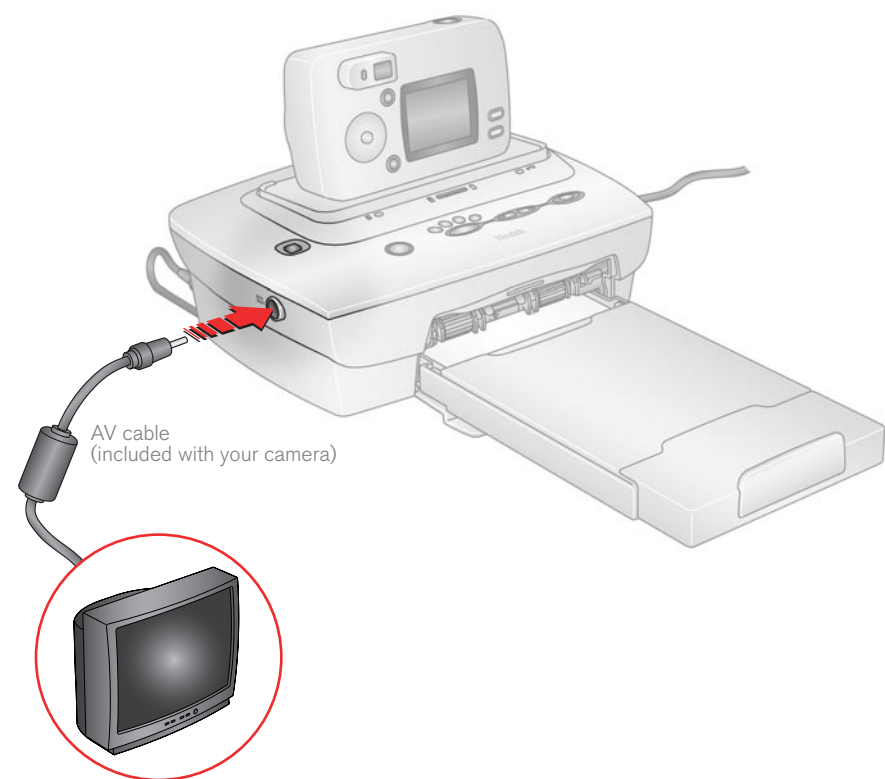




## 7 View Slide Show

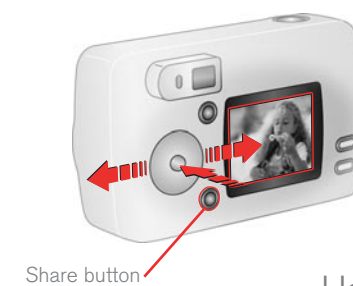
Connect to a television.

Press Slide Show. 



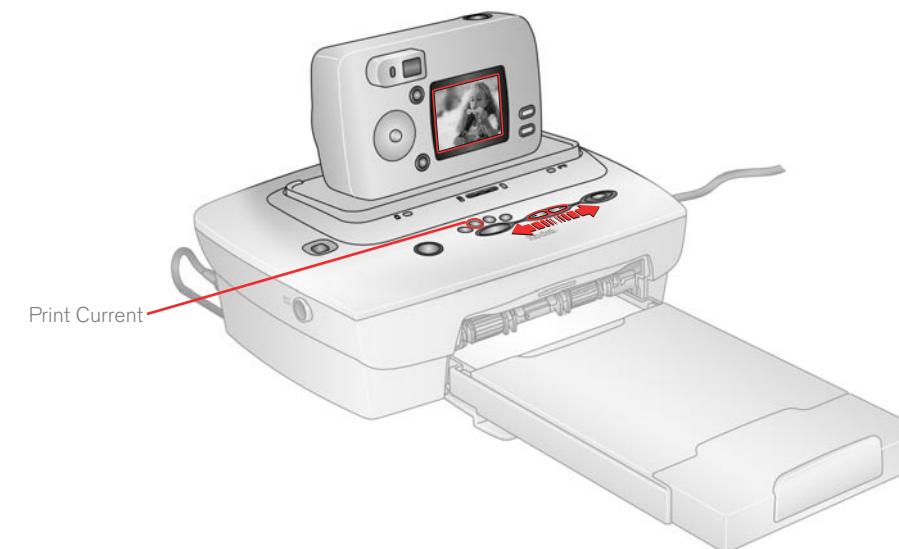
## 8 Select Image to Print

...Using Camera



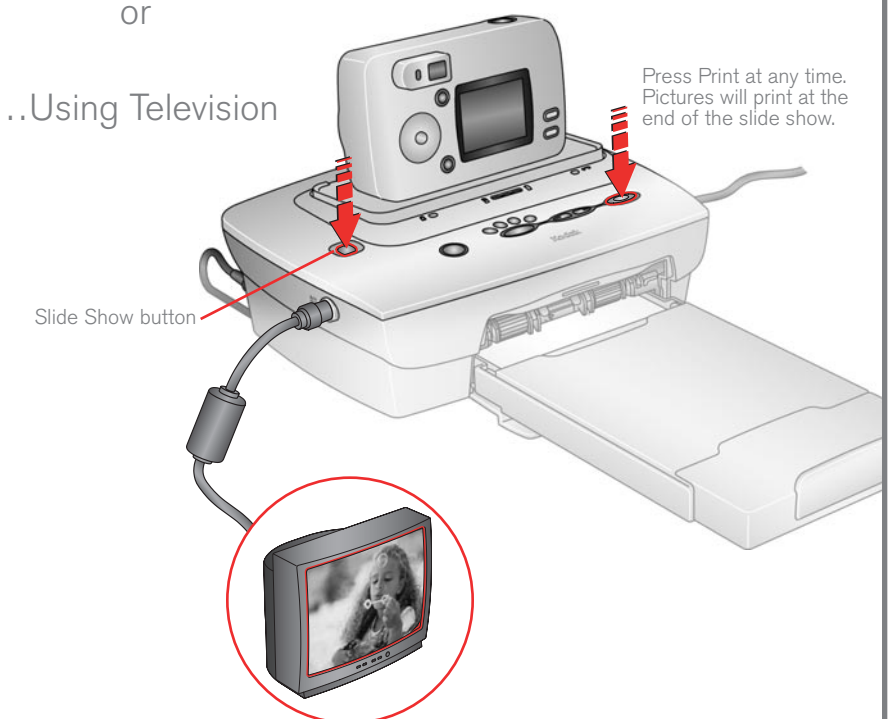
or

...Using Printer Dock arrow keys



or

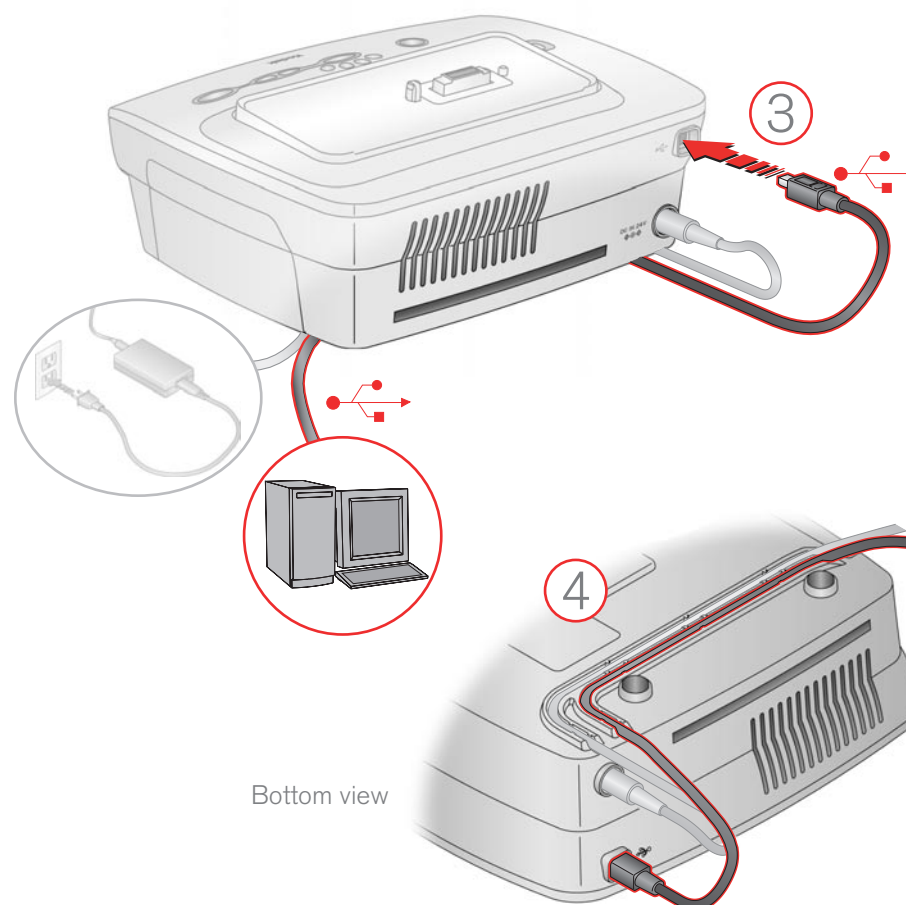
...Using Television



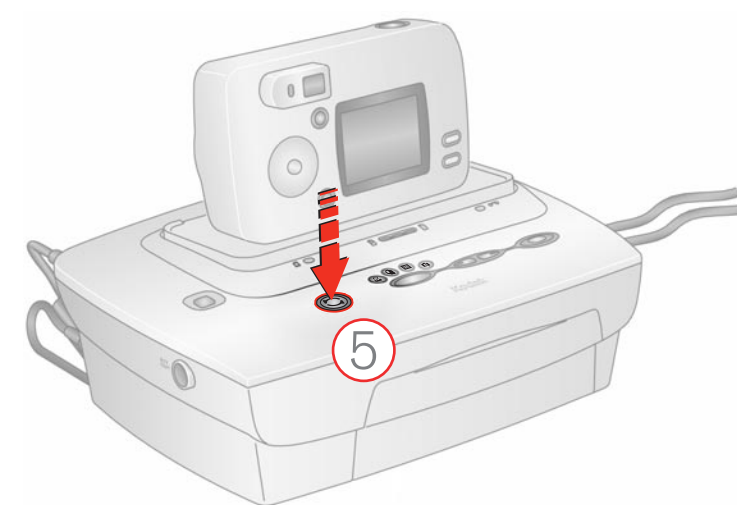
## 9 Transfer Pictures to Computer

Install Kodak EasyShare software  
(included with your camera) and  
printer dock 6000 software.

Connect USB cable.



Press Transfer. 



## Set Picture Quality on Camera

Set at Best (3:2).  
(Consult your camera manual for details.)

